

Products /  **CASTALDI** / TELLUX D44 / D44 TELLUX/R1 / D44K/R1-LWN4

## TELLUX D44 D44K/R1-LWN4

### TECHNICAL DATA

#### GENERAL



Item code	D44K/R1-LWN4
Place installation	outdoor
Name	D44 TELLUX/R1 / D44K/R1-LWN4 ground recessed
Note	5000K on request.
Standard colour	stainless steel frame sandblasted
Environments	façades and architectural works, wellness, hallway, conference hall, places of worship



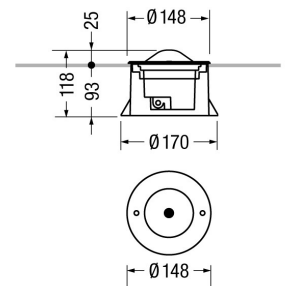
#### PHYSICAL

Installation type	ground recessed
Mounting type	with rough-in housing
Mounting note	On normally inflammable surfaces allowed.
Painting	Polyester powder coating, with a pluri-processed against corrosion (passed the exposure of over 1500 hours in a saline mist environment).
Screws	AISI 304 stainless steel screws.
Seals	Silicone Rubber.
Temperature glass	40°C
Static load	2000Kg
Body	Corrosion resistant die-cast aluminium body. High impact resistant composite technopolymer housing box. AISI 316 stainless steel frame sandblasted.



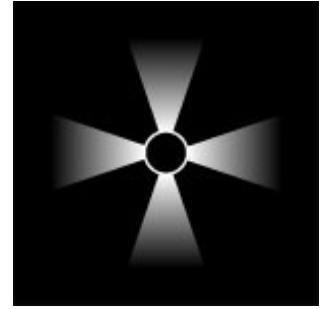
#### DIMENSIONS

D: Total diameter device (mm)	148
Built-in shaped	Round
Diameter built-in (mm)	170
Built-in depth (mm)	93
Weight (kg)	1,2
Volume piece packed (m3)	5



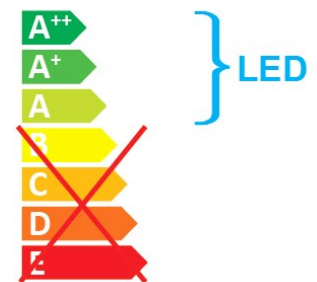
## OPTICAL SYSTEMS

Emission radial  
Opening beam diffused  
Diffuser Unbreakable UV-resistant polycarbonate.



## ENERGY SAVING

This luminaire contains built-in LED lamps  
The lamps cannot be changed in the luminaire



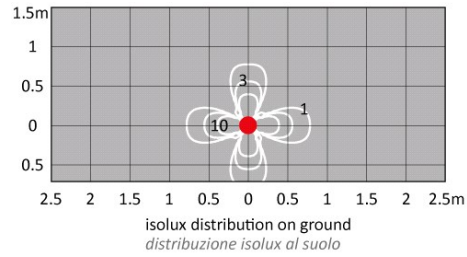
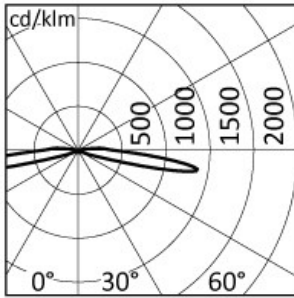
## SOURCES

Source Type	Source Power	System Power	Source	Lamp Socket	Sources Temperature	Colour	Nominal Flux	Output Flux	Source description
LED	2W	-	LED	-	4000K		117 lm	38 lm	-

## ELECTRICAL

Ballast type Electronic  
Mounting ballast type Integral  
Line input Pre-wired and tested with resin sealed watertight H07RN-F cable (for a fast and secure connection to the main power line, use ACS/CR1 connector or similar).  
Voltage 220-240V  
Frequency 50-60Hz

## PHOTOMETRICS



## NORMS / DIRECTIVES

Norms	EN 60598-1, EN 60598-2-13
Directives	2014/35/UE, 2014/30/UE

## ACCESSORIES

### INCLUDED ACCESSORIES

#### **Rough-in housing**

Ground and Wall rough-in housing box, high impact resistant composite technopolymer (Code PT0719).



## OPTIONAL ACCESSORIES

### Electrical

**Accessory code** ACS/CR1

**Technical description** Fast IP68 connector 1bar (10m-1h) for cable Ø7-12mm - 3x1.5mm.



**Accessory code** ACS/CR6

**Technical description** 4 ways IP68 wiring box for cable Ø5-14mm - 3x1,5mm.

